



==>SECURITY\DEMYSTIFIED

DEMYSTIFYING SECURITY FOR THE SYSTEM i ENTERPRISE

Bsafe/Enterprise Security is the single most comprehensive and easy to use security and compliance solution for IBM's System i®. With nineteen fully integrated GUI-controlled security, reporting and compliance modules, this software suite enables system administrators and auditors to easily manage security and compliance tasks efficiently and effectively.



ACCESS
CONTROL



MULTIPLE
SYSTEM
ADMINISTRATION



SECURITY
REPORTING
& FORENSICS



ENTERPRISE
COMPLIANCE
AUDITING



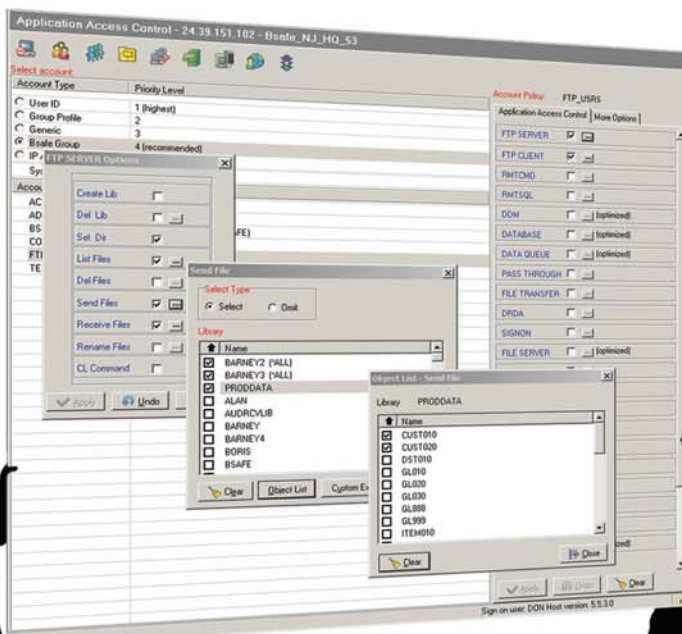
CUSTOMIZABLE
POLICY
TEMPLATES



SECURITY
A.I.

MANAGING SECURITY: BEYOND THE GREEN SCREEN

In response to today's world of privacy breaches, complex regulatory requirements and evolving threats, Bsafe enables security officers to identify suspicious behavior on the network, drill down to the appropriate user or object and take appropriate action quickly. The enterprise-wide perspective that Bsafe provides significantly enhances your current green screen reporting capabilities



GRAPHICAL USER INTERFACE: EMPOWERING SECURITY

The Bsafe/Enterprise Security GUI allows users to evaluate and act on security events in real-time. IT security officers can monitor high-level policies enterprise-wide and drill down to the user or object level in a matter of seconds.



LOCKING DOWN SYSTEM i

Bsafe/Enterprise Security gives you peace of mind regarding System i® lock down. Easily protect your exit points, manage user profiles and implement group policies for all of your enterprise systems. Lockdown is first performed in “warning mode” to allow for the gathering of pertinent security events and patterns to emerge. Once thorough analysis has been conducted, security lockdown and access control can commence through the use of the following modules:



✓ APPLICATION ACCESS CONTROL

- Comprehensive exit point control
- Flexible user profile and group permissions
- Authorization by IP address range
- Granular access management down to library, object, object group and IFS
- Account swapping for adopted authority
- Replication of policies across multiple servers
- File protection that prevents power user access

✓ APPLICATION ANALYZER

A graphical security event analyzer with event drill down capabilities

✓ USER PROFILE MANAGER

Efficient and effective System i® user management

✓ OBJECT AUTHORIZATION MANAGER

GUI-based control of native object authority

✓ SESSION TIME-OUT & INACTIVE USER CONTROL

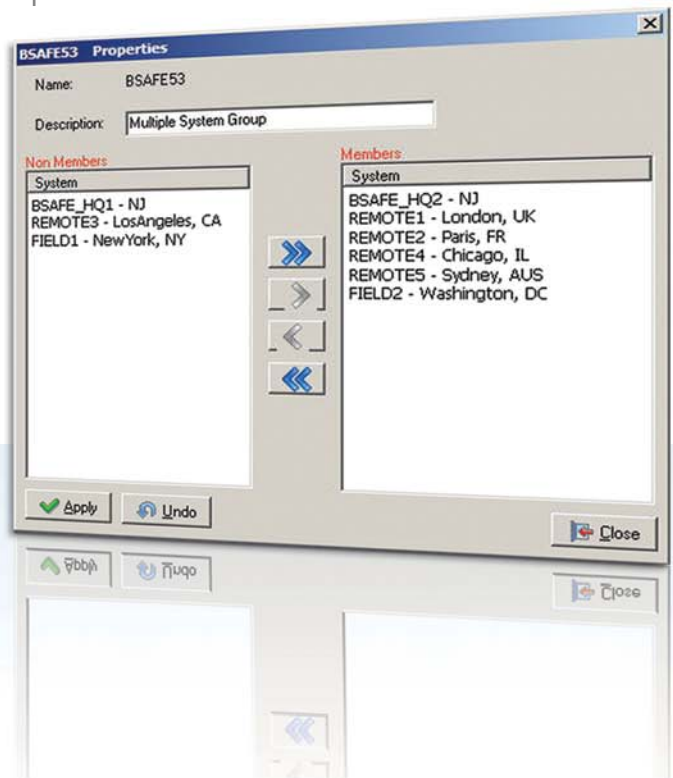
Account-specific session time-out and inactive user policies to ensure proper login access with ad hoc restoration of deleted user profiles

MULTIPLE SYSTEM MANAGEMENT



Managing security by grouping systems, significantly reduces reporting overload and simplifies enterprise level security policy implementation via:

- **Access Control Policy Replication** to remote systems
- **User Profile Propagation** across systems
- **Cross-System Compliance** reporting and auditing



REPORTS YOUR AUDITORS WILL APPRECIATE



Bsafe's Report Generator gives you control over integrating and presenting system data to meet the specific needs of your organization. Information such as power user activities, changes to sensitive data and system by system comparisons can be organized to best meet audit criteria using scope definitions, field selection, filter criteria, field sorting and Boolean Logic. Once created, these reports can be sent to your auditors in PDF, HTML and CSV formats.

Field	Field Type	Field Length	Value	Value of previous "Before Update" entry
CRDADR1	CHARACTER	20	375 SYLVAN	375 SYLVAN
CRDADR2	CHARACTER	20		
CRDCRDNUM	SIGNED	16,0	4567954216587546	4567954216587546
CRDCSTNUM	PACKED	9,0	321654987	321654987
CRDEXPDT	PACKED	4,0	909	909
CRDFNAM	CHARACTER	15	FREDDY	FREDDY
CRDLNAM	CHARACTER	20	C	C
CRDSEC	PACKED	3,0	876	375
CRDST	CHARACTER	2	ny	NJ
CRDTYPE	CHARACTER	10	MASTER	MASTER
CRDZIP	PACKED	5,0	10462	7632

Field-Level Auditing: Before & After Shots

FIELD-LEVEL AUDITING

Bsafe's field level auditing provides comprehensive tracking with "Before" and "After" images for monitoring changes to sensitive data.

DEMONSTRATING SECURITY

Bsafe/Enterprise Security offers versatile reporting capabilities. Samples of these reports include:

- System Value
- PCI Compliance
- SOX Compliance
- HIPAA Compliance
- Canadian Bill 198 Compliance
- GLBA Compliance
- Basel II Compliance
- Power User Activities
- User Profile Changes
- Detailed System Audit
- Object Authority
- Object Description
- Field-Level Auditing



REPORTING & AUDITING TOOLS 

Bsafe's powerful auditing and reporting capabilities offer a documented audit trail of your system's security definitions, events and activities. This is accomplished through the following functionality:

APPLICATION AUDIT

Detailed log of network and native exit point activity with powerful filtering tools

FILE AUDIT

A data integrity monitor that documents field-level database changes

SYSTEM AUDIT

Consolidated control of system journal policy, event viewing and reporting

SYSTEM INQUIRIES

Predefined reports of native security definitions, sensitive authorities, system values and users with default password based on industry best practices

SQL STATEMENT AUDIT

Detailed monitoring of SQL-related transactions on your System i®

CROSS-PLATFORM AUDIT

Centralize audit and log data from System i®, Mainframe and Windows Active Directory into one off-loadable database with DSDI management capabilities



All Objects in Library PRODDATA Sorted by Size

System Value Comparison Between Multiple Systems

Users with "All Objects" Special Authority

SOX Compliance - Invalid Sign-on Attempts

System Value Deviation Report - Across Multiple Systems

System Value Name	System Value Description	TEMPLATE	Systems					
			MSDEV	BARNEY	BSF51	BSF53	MSPRG	OCEAN
QPWDEXPTV	Password expiration interval	60	60	90	60	60	60	15
QPWDLMTAIC	Limit adjacent digits in password	1	0	1	1	1	1	1
QPWDLMTCHR	Limit characters in password	#,@	#,@	#,@	#,@	*NONE	#,@	\$
QPWDLMTREP	Limit repeated characters in password	0	0	0	2	0	0	0
QPWDLVL	Password level	1	1	0	1	1	1	0
QPWDMAXLEN	Maximum password length	10	10	10	10	10	10	10
QPWDMINLEN	Minimum password length	5	5	5	5	5	5	6
QPWDPOSDIF	Limit password character position	1	1	1	1	1	1	1
QPWDRQDDGT	Require digit in password	1	1	1	1	1	1	1
QPWDRQDDIF	Duplicate password control	4	5	4	4	4	4	4
QPWDLDPGM	Password validation program	*NONE	*NONE	*NONE	*NO			

TEMPLATE-BASED COMPLIANCE MANAGEMENT



Demystify the difficult task of enterprise-wide compliance management and deviation monitoring with easily defined templates that address regulatory requirements such as PCI, SOX, HIPAA and GLBA.

The screenshot displays the 'Compliance Administration' interface. At the top, a 'Policy List' table shows a policy named 'PCL_OBIAUT_PWRUSRS' with a magnifying glass over it. A callout box on the right states: **POLICY TEMPLATE: Not Compliant with PCI**. Below this, the 'Central Audit' window shows a list of events, with one event selected. The 'Event Details' window is open, showing a deviation where the system value is '*USE NO VALUE FOUND' and the policy value is '*EXCLUDE *USE'. A callout box on the right states: **POLICY: *PUBLIC is *EXCLUDE from CARDMST**. A callout box on the left states: **DEVIATION: *PUBLIC has *USE access**.

COMPLIANCE DEVIATION MONITORING AND ENFORCEMENT

Once compliance templates are in place, system administrators, security officers and auditors can view deviations from compliance policy throughout the enterprise. Enforcing compliance rules can be achieved with the click of a mouse. Some of the benefits of managing compliance through Bsafe's templates include:

- Improved Synergy between Business and Technology Units
- Accelerated Compliance Timelines
- Protection of Consumer Data (PCI, State Privacy Regulations)
- Ensuring Data Integrity
- Centralized Security Policy Enforcement (PCI, SOX, GLBA, Canadian Bill 198)
- Streamlined Management of User Capabilities (SOX, HIPAA, Basel II, COBIT)
- Segregation of Duties



ENABLING ENTERPRISE-WIDE COMPLIANCE

Bsafe assists diverse teams in unifying their compliance efforts by eliminating redundancy and reducing the complexity of regulatory adherence. Compliance can be achieved by using:



POLICY COMPLIANCE MANAGER

Template-based control of native definitions, deviation reporting and remediation

ALERT CENTER

Intrusion Detection System (IDS) providing instant alerts for compliance deviations

COMPLIANCE TOOLKIT

Essential reports and alerts addressing compliance requirements

ADMINISTRATION ROLE MANAGER

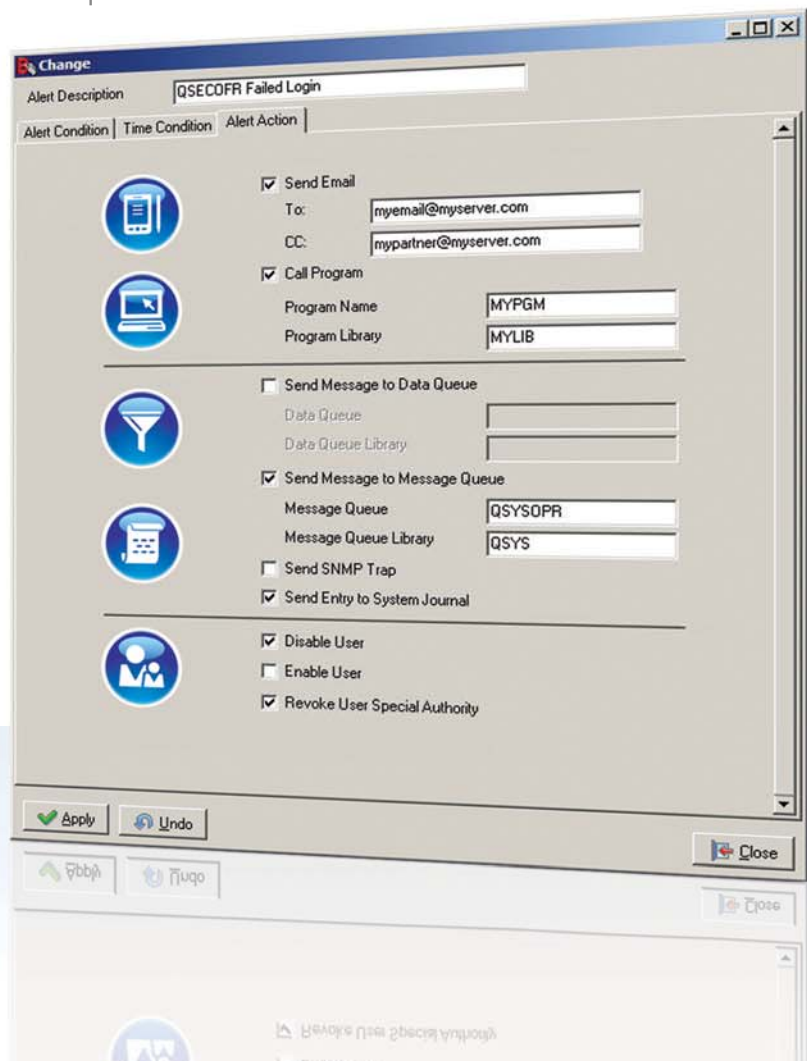
Tailor specific security administration roles to facilitate separation of duties

HELP DESK ASSISTANT

Offload your help desk tasks while maintaining security and compliance requirements

COMPLIANCE DRIVEN ALERTS

Bsafe provides a host of alerting and intrusion detection tools to enable real-time security and compliance monitoring through the use of e-mail and text messages. Also included are A.I.-driven system responses such as disabling a user or revoking special authority status for particularly egregious violations





BSAFE PROFESSIONAL SERVICES

The Bsafe Professional Services team combines years of security experience and expertise to add value to your IT team. Whether you are preparing for a single-site audit or a multi-faceted enterprise implementation, Bsafe Professional Services enables you to:

- **Step Up Security**
- **Accelerate Compliance Implementation**
- **Avoid Regulatory Pitfalls by Applying Proven Best Practices**
- **Enhance your IT Team's Value and Expertise**
- **Reduce Cost of Ownership**
- **Mitigate Security Risks**



Bsafe Information Systems, Inc.

375 Sylvan Avenue, Suite #30
Englewood Cliffs, NJ 07632-2706

Tel: (877) 237-8024
Fax: (775) 593-4464

info@bsafesolutions.com
www.bsafesolutions.com